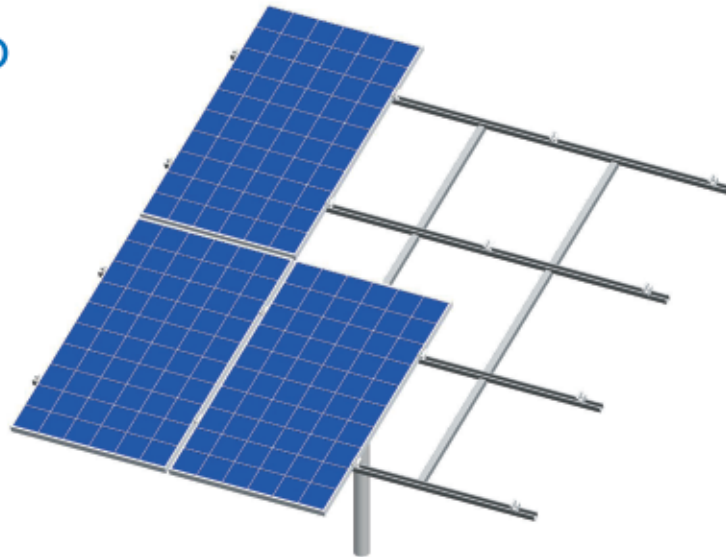


Dual Axle Tracking System

Series Name : TS-D



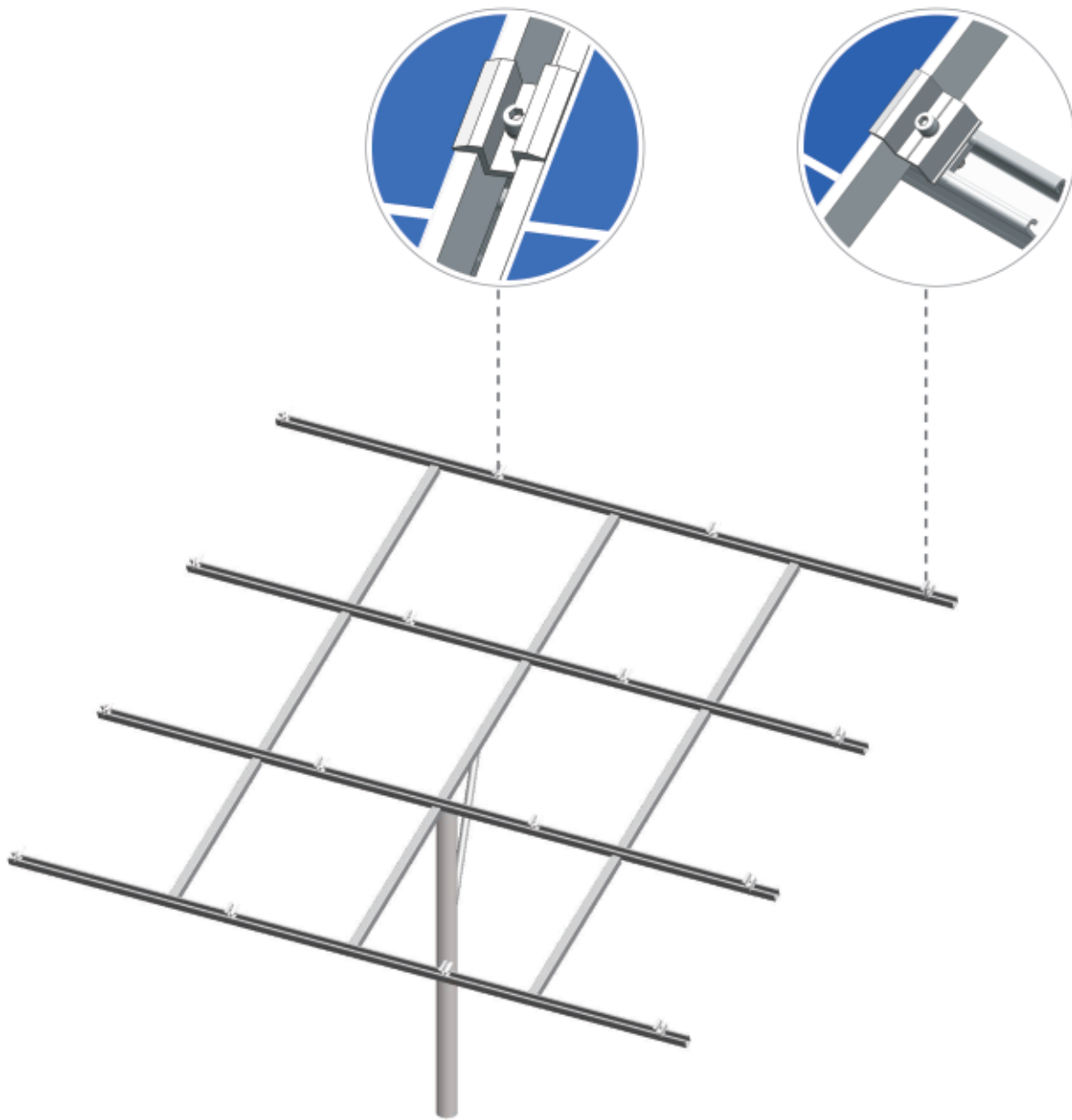
Technical Data

- Solar system: PV plant, PV park, open area ground PV system
- Unit System capacity : 4KW ~ 15KW
- Solar module: 15 ~ 60pcs x 250W poly module (1650*992*40mm)
- Structure material: hot-dip galvanized steel
- Average thickness of zinc layer: up to 80um or customized
- Rotation angle: Azimuth: 245°, elevation angle 0-75°
- Tracking accuracy: $\leq 0.1^\circ$
- Wind speed for safe operation: $< 75 \text{ km/h}$ (21m/s)
- Maximum anti wind speed: $< 150 \text{ km/h}$ (42m/s)
- Controlling part : PLC
- Protection level: IP65
- Driving motor: AC380V/AC220V
- Working condition: -35°C to 65°C
- Mechanical structure lifespan: 25years

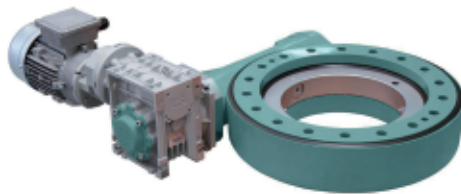
Features

- Automatic tracker, follow sun movement precisely
- Three dimension rotation to absorb maximum solar energy
- Produce 40% more power than fixed system
- Auto track, auto reset, auto control
- Suitable for solar projects in medium, high latitude location
- Easy installation & low maintenance
- Warranty: structure 10 years, electric controlling part 1year
- 25 years anti corrosion warranty





WM-40
Slew Driver



WM-41
Slew Driver



WM-42
Slew Driver