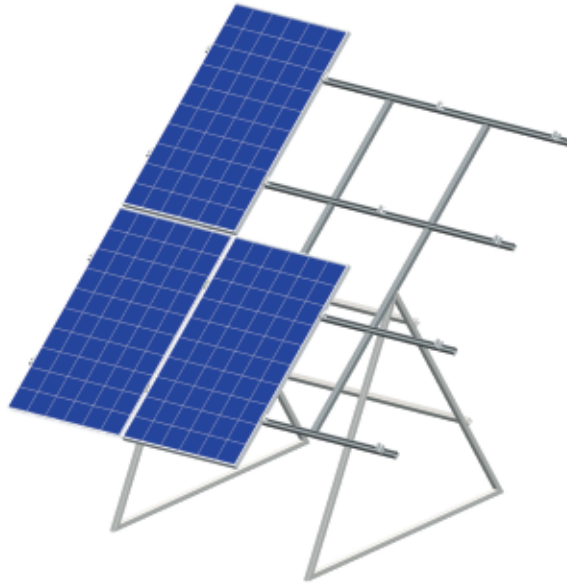


Single Axle Tracking System

Series Name : TS-S



Technical Data

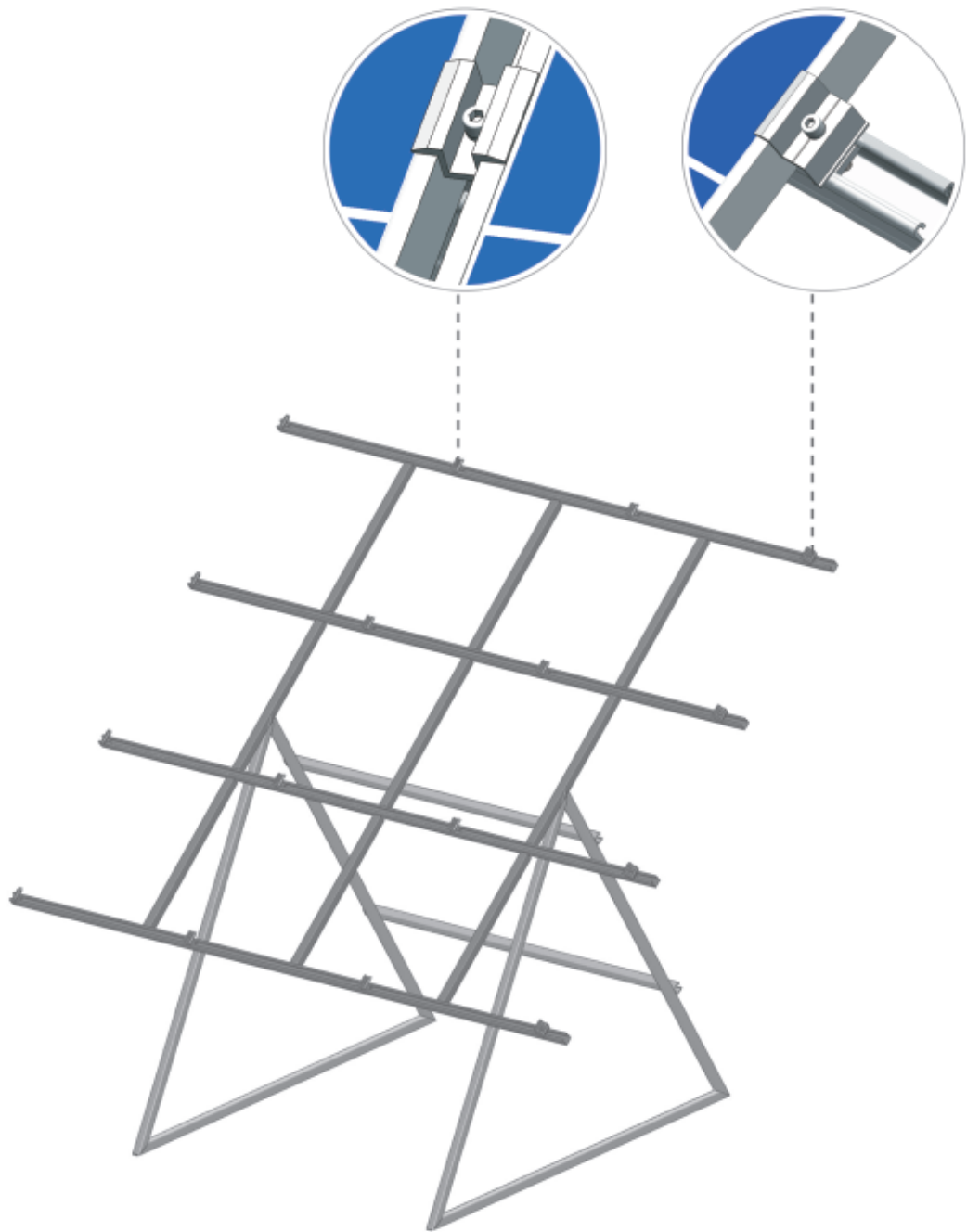
- Solar system: PV plant, PV park, open area ground PV system
- Unit System capacity : 5KW ~ 15KW
- Solar module: 20 ~ 60pcs x 250W poly module (1650*992*40mm)
- Structure material: hot-dip galvanized steel
- Average thickness of zinc layer: up to 80um or customized
- Rotation angle: +/-45°
- Tracking accuracy: <=0.1°
- Wind speed for safe operation: <90 km/h (25m/s)
- Maximum anti wind speed: <145 km/h (40m/s)
- Controlling part : PLC
- Protection level: IP65
- Driving motor: 24V DC (or 3000 RPM)
- Working condition: -35°C to 65°C
- Mechanical structure lifespan: 25years



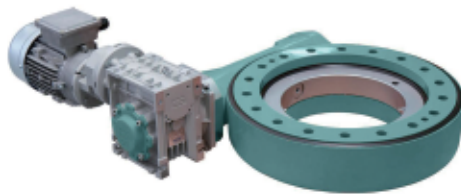
Features

- Automatic tracker, follow sun movement precisely & maximize module energy output
- Produce 20% to 30% more power than fixed system
- Wide rotation angle from -45 degree to 45 degree
- Automatically adjust to horizontal position to avoid strong wind
- No oil, high technology polymer material bearing to against rain, sand and water corrosion
- Auto track, auto reset, auto avoid shadow
- Easy installation & low maintenance
- Warranty: structure 10 years, electric controlling part 1year
- 25 years anti corrosion warranty

www.weiermetal.com



WM-40
Slew Driver



WM-41
Slew Driver



WM-42
Slew Driver